

Not just a load of rubbish: Waste Management in Perth's Eastern Region

Gabrielle Grime
Waste Education Coordinator,
Eastern Metropolitan Regional Council

- What do you do currently to minimise waste going to landfill?



Whenever we shop,
we buy our rubbish.



The Waste Matrix



AVOID



DISPOSE

Who are we?



- **Regional Council** (constituted under the Local Government Act 1995)
- Working on behalf of six member Councils
- **Governed by a Council** (representatives from each member Council)





WASTE MANAGEMENT SERVICES



Green Waste Processing



Waste Transfer Station
Greenwaste



HAZELMERE TIMBER RECYCLING CENTRE



**Future:
Mattress recycling**



RESOURCE RECOVERY



Resource Recovery Park

Alternative Waste Treatment
Facility



Waste Education



Bright plan to recycle fluorescent lights

By [Name]
 [The text of the article is mostly illegible but appears to discuss recycling fluorescent lights.]



2008/2009 Waste & Recycling Guide



Shire of Mundaring Waste & Recycling Guide 2008 / 2009

July 2008	August 2008	September 2008	October 2008	November 2008	December 2008
S M T W T F S 1 2 3 4 5 6 7 8 9 10 11 12 13 14 15 16 17 18 19 20 21 22 23 24 25 26 27 28 29 30 31	S M T W T F S 1 2 3 4 5 6 7 8 9 10 11 12 13 14 15 16 17 18 19 20 21 22 23 24 25 26 27 28 29 30 31	S M T W T F S 1 2 3 4 5 6 7 8 9 10 11 12 13 14 15 16 17 18 19 20 21 22 23 24 25 26 27 28 29 30 31	S M T W T F S 1 2 3 4 5 6 7 8 9 10 11 12 13 14 15 16 17 18 19 20 21 22 23 24 25 26 27 28 29 30 31	S M T W T F S 1 2 3 4 5 6 7 8 9 10 11 12 13 14 15 16 17 18 19 20 21 22 23 24 25 26 27 28 29 30 31	S M T W T F S 1 2 3 4 5 6 7 8 9 10 11 12 13 14 15 16 17 18 19 20 21 22 23 24 25 26 27 28 29 30 31
January 2009	February 2009	March 2009	April 2009	May 2009	June 2009
S M T W T F S 1 2 3 4 5 6 7 8 9 10 11 12 13 14 15 16 17 18 19 20 21 22 23 24 25 26 27 28 29 30 31	S M T W T F S 1 2 3 4 5 6 7 8 9 10 11 12 13 14 15 16 17 18 19 20 21 22 23 24 25 26 27 28 29	S M T W T F S 1 2 3 4 5 6 7 8 9 10 11 12 13 14 15 16 17 18 19 20 21 22 23 24 25 26 27 28 29 30 31	S M T W T F S 1 2 3 4 5 6 7 8 9 10 11 12 13 14 15 16 17 18 19 20 21 22 23 24 25 26 27 28 29 30 31	S M T W T F S 1 2 3 4 5 6 7 8 9 10 11 12 13 14 15 16 17 18 19 20 21 22 23 24 25 26 27 28 29 30 31	S M T W T F S 1 2 3 4 5 6 7 8 9 10 11 12 13 14 15 16 17 18 19 20 21 22 23 24 25 26 27 28 29 30 31

Recycling
9290 6666
www.rg.org.au

Get your own Recycling Bin
Now make Recycling Fun!
100% Recycled Plastic
100% Recycled Steel

- Area One Recycling Week
- Area Two Recycling Week
- Household Hazardous Waste Collection
- No On Main Street Day

**FOR LEASE, HIRE, REPAIR
REGION CALL: 9290 6666**

When are my bins collected?

When are my 240L bins collected?

When can I take household hazardous waste (HHW)?

When are my 240L bins collected at recycling day?

How do I ensure the best use of my bins?

BIN COLLECTIONS

BULK COLLECTIONS

HHW

RECYCLING

NO WASTE

Put items back in your green-top recycling bin.

NO GREASE, OIL, FLAMMABLE LIQUIDS OR SOLIDS

Household Hazardous Waste Disposal Days



- Held **monthly** throughout Perth's Eastern Region (2 per member Council each financial year)



Community Research



Quietly Confident Recyclers –
32.1%



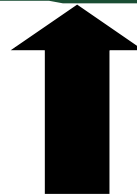
Non Recyclers – 7.4%



Infrastructure Dependent
Recyclers – 16.9%



Committed Recyclers – 43.3%



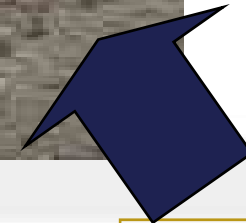
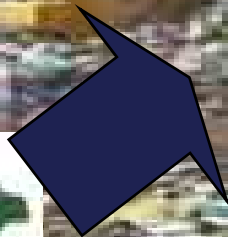
A few concerns....



- Potential “Waste Ambassadors”:
 - Do hold a degree of cynicism regarding recycling and landfill
 - Exhibit a similar level of confusion as to “what goes into what bin” when compared to other groups

Do you share these concerns?

Why be concerned about how much waste is generated to landfill?



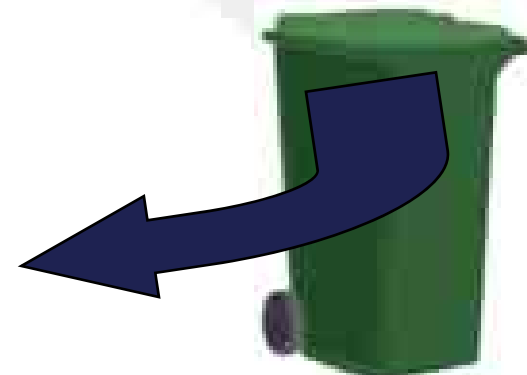
2007-2008:
388,430 tonnes of rubbish to landfill

Waste Transfer
Stations Refuse



What goes into the green-top bin?

Consolidated Composition of Garbage in All Councils



E.g. Clothing, nappies, dust, rocks, wood, pharmaceuticals, ceramics, oil, household chemicals

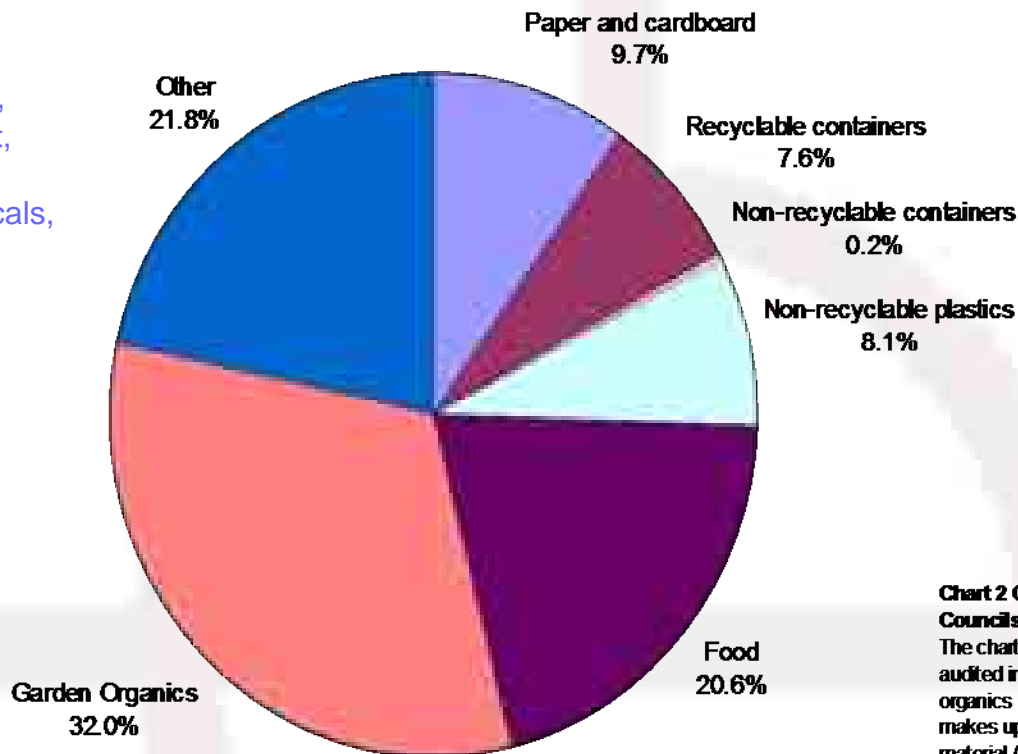


Chart 2 Consolidated composition of the garbage stream - All Councils

The chart shows the composition of the garbage stream for all households audited in all councils consolidated into some key categories. Garden organics at 32.0% forms the largest part of the garbage stream. Food makes up another 20.6%. A total of 17.3% is also made up of recyclable material (paper and recyclable containers).

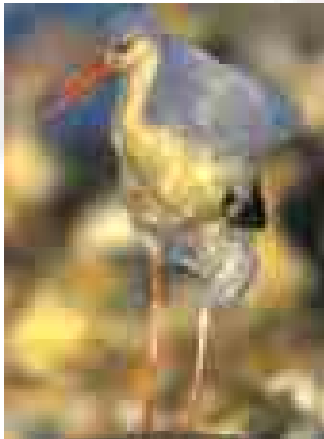
1 out of every **5** bags of groceries are put into the rubbish bin (average **145kg** of food per person is wasted a year) in Australia.



Australians generate about **690 kg of waste per year**, per person, making us the second highest generators of waste in the world behind the USA.

Plastic Bags

- **4.5 billion** per year used by Australians.
- Around **45 million** end up as litter. (KABC)
- **The most common contaminant in yellow-top bins**
- Limited recycling capacity
- Commonly used as bin liners – take a long time to break down in landfill and are major litter causes in landfills.



Major myths about recycling...



Recycling just goes to landfill anyway...

My little bit of recycling won't make a difference...

1

**material
collection**



2

sorting



3

**steel
removal**



4

**trommel
sorting**



5

**screen
sort**



6

**air
separation**



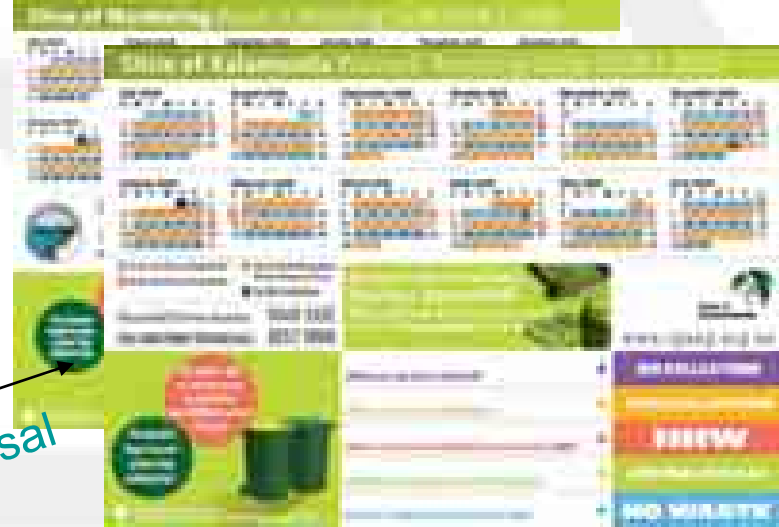
7 ceramic
detection



8 glass
storage



9 final
storage



*Correct disposal
information*

Major contaminants:

- Plastic bags
- Glass shards and non-bottle glass (e.g. window glass)
- Plastic wrap (e.g. glad wrap, bread bags) and non-recyclable plastics (e.g. polystyrene foam)

Contaminants can be **hazardous...**



Oil

Syringes



Where does my recycling go?



- Highly dependant on markets and available technologies – **recyclables are a resource.**

Household Item

Soft drink cans, aluminium foil

Food & pet food cans,
paint and aerosol cans

Glass bottles and jars

Plastic drink containers

Recycled Into

Soft drink cans, aircraft skins,
bikes, roof guttering, BBQs

Steel cans, fridges, washing
machines and car parts

New glass jars and bottles,
house insulation (batts),
roadbase.

Fleecy clothing, lingerie, new
drink containers and underlay.

Reasons to recycle...



- **Reduction in greenhouse gas emissions:** Methane gas caused by the decomposing of organic wastes (food & garden waste) in landfills.

Compost bins/worm farms: closes the food loop at home.

- **Reduction in use of finite resources**
- **Reduction in amount of energy and water required to produce new products.**
E.g. Recycling 1 tonne of plastics saves enough energy to run a refrigerator for a month.
- **Encourages recycling sector to become more financially viable...**



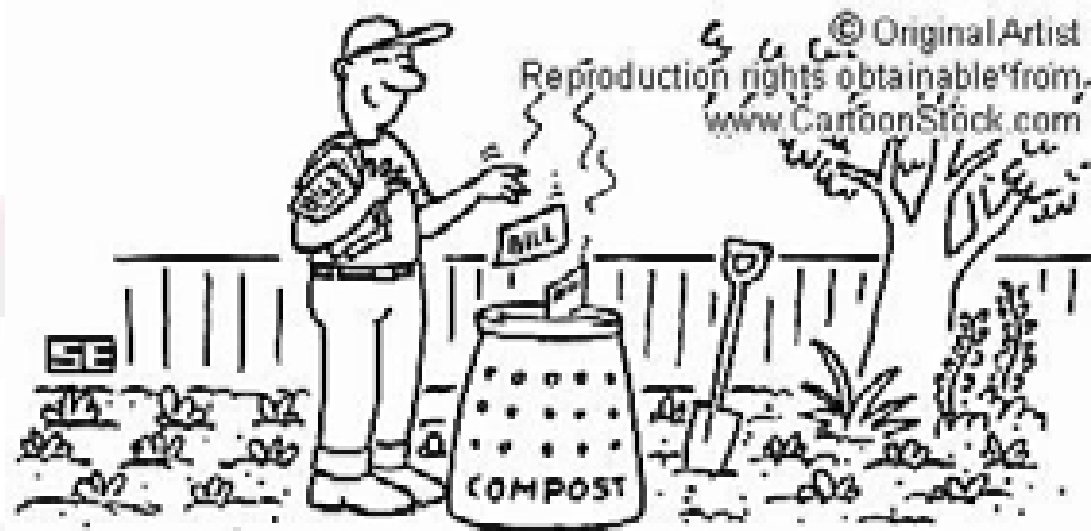
- What do you do currently to minimise waste going to landfill?



How could you do more?



Questions?



Bert always found plenty of rubbish for his compost bin.